



MIAMI

**School of
Business Administration**

Fact File

Fall 2016

Office of Planning, Institutional Research and Assessment

(305) 284-FACT

TABLE OF CONTENTS

Student Enrollments:

Headcounts and FTE (by Class)	1
Enrollment and FTE by Level (by Trends)	2
Entering Undergraduates and New Freshmen Quality Statistics (by Trends)	3
Admission Statistics for new Master's and Doctoral students by Major (by Trends)	5
Headcounts by Major (by Class and Trends) and by Minor (by Class)	9

Demographics:

Gender by level (by Trends)	14
Ethnicity by level (by Trends)	16
Ages	18
Geographic Origins by level (by Trends)	19
Headcounts by World Region and Class	22

Fall-to-Fall (Benchmark) Retention Rate Trends	27
--	----

Credit Hours for Fall Semester:

Credit Hours Taught (by Trends)	29
Total Credit Hours Taught by Department (by Level and Trends)	30
Crossover Pattern (by Level and Trends)	32

Credit Hours for Previous Fiscal Year:

Total Credit Hours Taught by Department (by Level)	34
--	----

Degrees Granted by Major	35
--------------------------	----

Faculty (by Trends)	36
---------------------	----

Full-time/Part-time Faculty by Track (by Department)	37
--	----

Grade Report (will be updated in February)	39
--	----

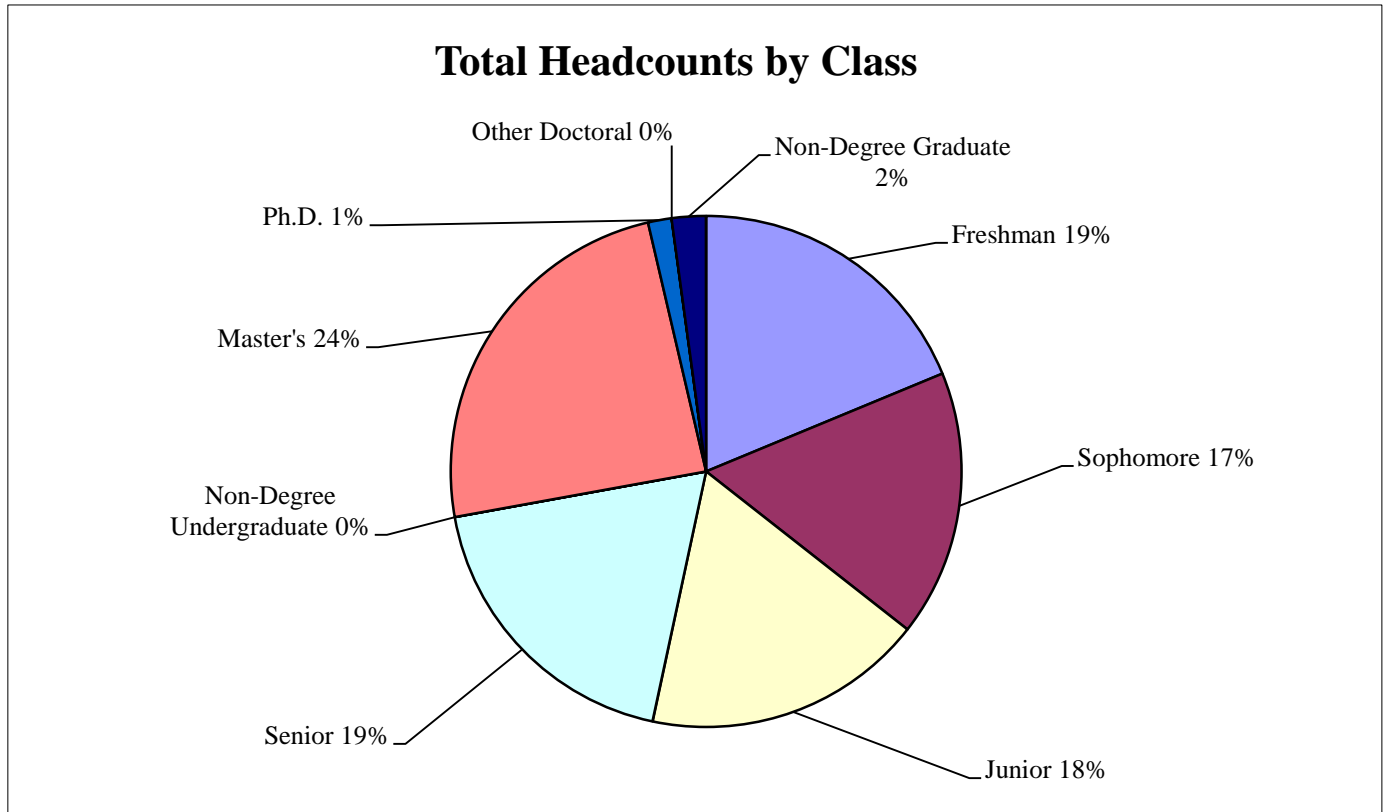
Graduation Rates (will be updated in February)	40
--	----

HEADCOUNTS AND FTE BY CLASS
Fall Semester, 2016

Class and Level	HEADCOUNTS			FTE
	Full-time	Part-time	Total	
Freshman	596	3	599	597.5
Sophomore	537	1	538	537.3
Junior	567	1	568	567.8
Senior	585	15	600	593.5
Non-Degree Undergraduate	0	0	0	0.0
TOTAL UG	2,285	20	2,305	2296.1
Master's	675	98	773	741.5
Ph.D.	48	0	48	48.0
Other Doctoral	0	0	0	0.0
Non-Degree Graduate	29	40	69	61.0
TOTAL GRADUATE	752	138	890	850.5
TOTAL (ALL CLASSES)	3,037	158	3,195	3146.6

Note: FTE totals may differ due to rounding.

Source: CaneLink



ENROLLMENT BY LEVEL
Five-Year Trends, Fall Semesters

HEADCOUNTS						
Level	2012	2013	2014	2015	2016	4-Year Change
Degree Undergraduate	1,934	2,166	2,231	2,331	2,305	19%
Non-Degree Undergraduate	0	0	0	0	0	n.a.
Graduate	585	601	706	900	890	52%
TOTAL	2,519	2,767	2,937	3,231	3,195	27%

PERCENTAGE BY LEVEL					
Level	2012	2013	2014	2015	2016
Degree Undergraduate	77%	78%	76%	72%	72%
Non-Degree Undergraduate	0%	0%	0%	0%	0%
Graduate	23%	22%	24%	28%	28%
TOTAL	100%	100%	100%	100%	100%

Source: CaneLink

FULL-TIME EQUIVALECE BY LEVEL
Five-Year Trends, Fall Semesters

FTE						
Level	2012	2013	2014	2015	2016	4-Year Change
Degree Undergraduate	1913.8	2140.8	2211.0	2318.1	2296.1	20%
Non-Degree Undergraduate	0.0	0.0	0.0	0.0	0.0	n.a.
Graduate	565.4	582.3	692.9	872.4	850.5	50%
TOTAL	2479.3	2723.1	2903.9	3190.5	3146.6	27%

Note: Totals may differ due to rounding.

Source: CaneLink

ENTERING UNDERGRADUATES
Five-Year Trends, Fall Semesters

HEADCOUNTS						
Level	2012	2013	2014	2015	2016	4-Year Change
New Freshmen	428	460	495	503	485	13%
New Transfer	28	22	21	35	24	-14%
Degree Undergraduate Readmit	11	5	0	0	0	-100%

Note: Number of New Freshmen in this table is based on the enrolled school, which may differ from the school the student applied.

Source: CaneLink

	2012	2013	2014	2015	2016	4-Year Difference
New Freshmen						
Numbers						
Applied	6,084	6,475	7,149	7,986	7,395	22%
Admitted	2,086	2,376	2,488	2,717	2,594	24%
Enrolled	428	460	495	499	480	12%
Acceptance Rate	34%	37%	35%	34%	35%	1%
Yield	21%	19%	20%	18%	19%	-2%
Academic Credentials						
Official SAT						
Mean	1284	1294	1285	1286	1280	-4
75th Percentile	1370	1370	1360	1350	1360	-10
Median	1300	1310	1300	1300	1310	10
25th Percentile	1210	1220	1230	1220	1215	5
Number included in computation	219	221	211	201	176	

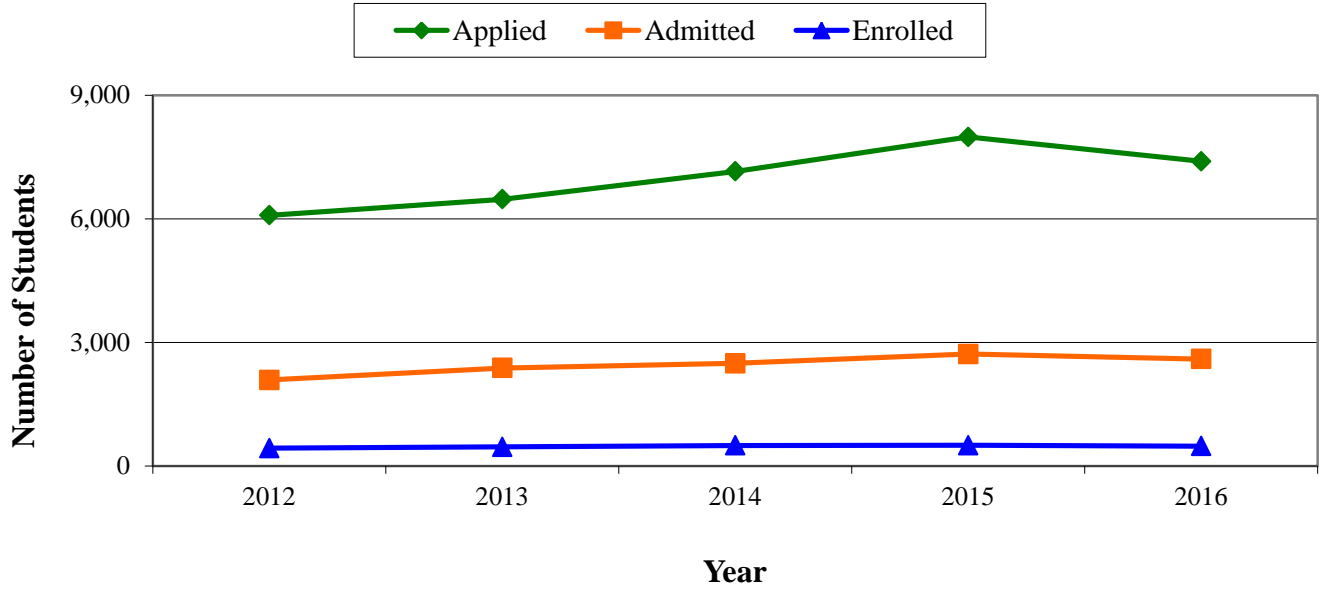
Note: Data in this table include students who entered in summer prior to the fall. This methodology is employed to ensure data in this table are consistent with those UM reports on external surveys.

Number of New Freshmen in this table is based on the school the student applied, which may differ from the school the student enrolled. This is the only table in this Fact File that the number of New Freshmen is based on the school applied

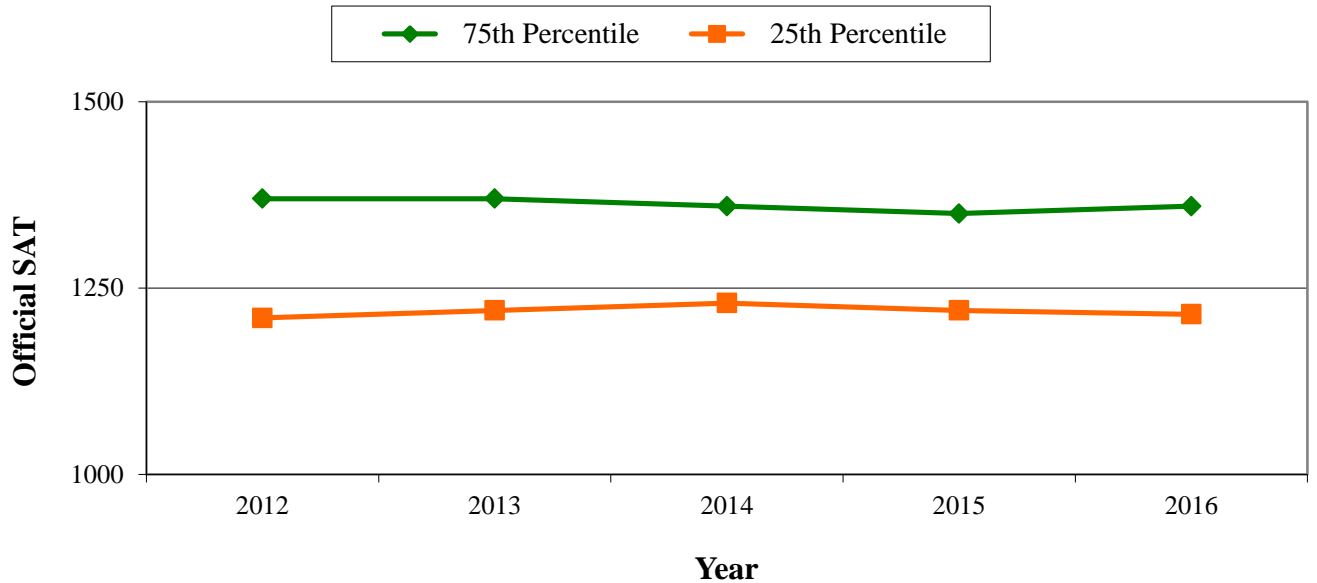
Source: CaneLink

ENTERING NEW FRESHMEN
Five-Year Trends, Fall Semesters

Number of Applied, Admitted, Enrolled New Freshmen



Official SAT



ADMISSION STATISTICS FOR NEW STUDENTS AT MASTER'S LEVEL BY MAJOR
Fall Semester, 2016

Academic Plan	Program	Applied	Admitted	Enrolled	Acc. Rate	Yield Rate	Mean GMAT Scores (Enrolled Stud.)				Mean UG GPA	# of Students
							Verbal	Quant.	Total	# of Stud.		
ACCT_MACC	Accounting	432	154	52	36%	34%	30	43	600	30	3.4	52
BUAN_MSBA	Management Science	174	74	26	43%	35%	28	43	594	14	3.4	26
BUSA_MBA	Master of Business Administration	686	156	69	23%	44%	34	42	626	47	3.3	69
ECON_MAE	Economics	53	29	7	55%	24%	21	49	590	1	3.2	7
FINL_MSF	Finance	374	91	22	24%	24%	30	44	610	17	3.3	22
INBS_MIBS	Executive and Special Program	176	63	24	36%	38%	24	35	496	13	3.2	24
MBAA_MBA	Executive M.B.A. for the Americas	40	33	15	83%	45%	31	49	660	1	3.1	13
MGST_MSMS	Management	62	34	22	55%	65%	23	30	450	5	3.0	21
OACC2_MPRA	Online Accounting	4	3	3	75%	100%	20	42	500	1	n.a.	0
OACCT_MPRA	Online Master of Professional Accounting	53	17	10	32%	59%	n.a.	n.a.	n.a.	0	n.a.	0
OBUSA_MBA	Online Master of Business Administration	147	29	15	20%	52%	33	40	607	3	3.1	4
OFIN_MSF	Online Master of Science in Finance	6	6	6	100%	100%	38	35	600	1	n.a.	0
OFINL_MS	Online Master of Science (Finance)	40	6	4	15%	67%	n.a.	n.a.	n.a.	0	n.a.	0
PROF_MBA	Professional Management	47	18	13	38%	72%	n.a.	n.a.	n.a.	0	2.7	13
TAXT_MSTX	Master of Science in Taxation	33	24	15	73%	63%	28	29	490	2	3.7	15
WRKP_MBA	M.B.A.-Working Professionals	70	59	36	84%	61%	28	34	515	2	3.1	36
TOTAL		2,397	796	339	33%	43%	30	41	591	137	3.3	302

Note: Numbers are based on the application school from UM's Graduate Student Admission System.

Source: CaneLink

ADMISSION STATISTICS FOR NEW STUDENTS AT DOCTORAL LEVEL BY MAJOR
Fall Semester, 2016

Academic Plan	Major Name	Applied	Admitted	Enrolled	Acc. Rate	Yield Rate	Mean GRE Scores (Enrolled Stud.)				Mean UG GPA	# of Students
							Verbal	Quant.	Total	# of Stud.		
BACC_PHD	Business Administration in Accounting	12	0	0	0%	n.a.	n.a.	n.a.	n.a.	n.a.	n.a.	n.a.
BFIN_PHD	Business Administration in Finance	25	3	3	12%	100%	156	166	322	2	n.a.	0
BMGT_PHD	Business Administration in Management	24	3	3	13%	100%	163	158	505	3	2.9	2
BMKT_PHD	Business Administration in Marketing	36	2	2	6%	100%	162	158	320	2	n.a.	0
BMSC_PHD	Business Administration in Management Science	3	2	2	67%	100%	n.a.	n.a.	n.a.	0	n.a.	0
ECON_PHD	Economics	8	4	4	50%	100%	152	162	313	4	3.1	2
TOTAL		108	14	14	13%	100%	157	161	368	11	3.0	4

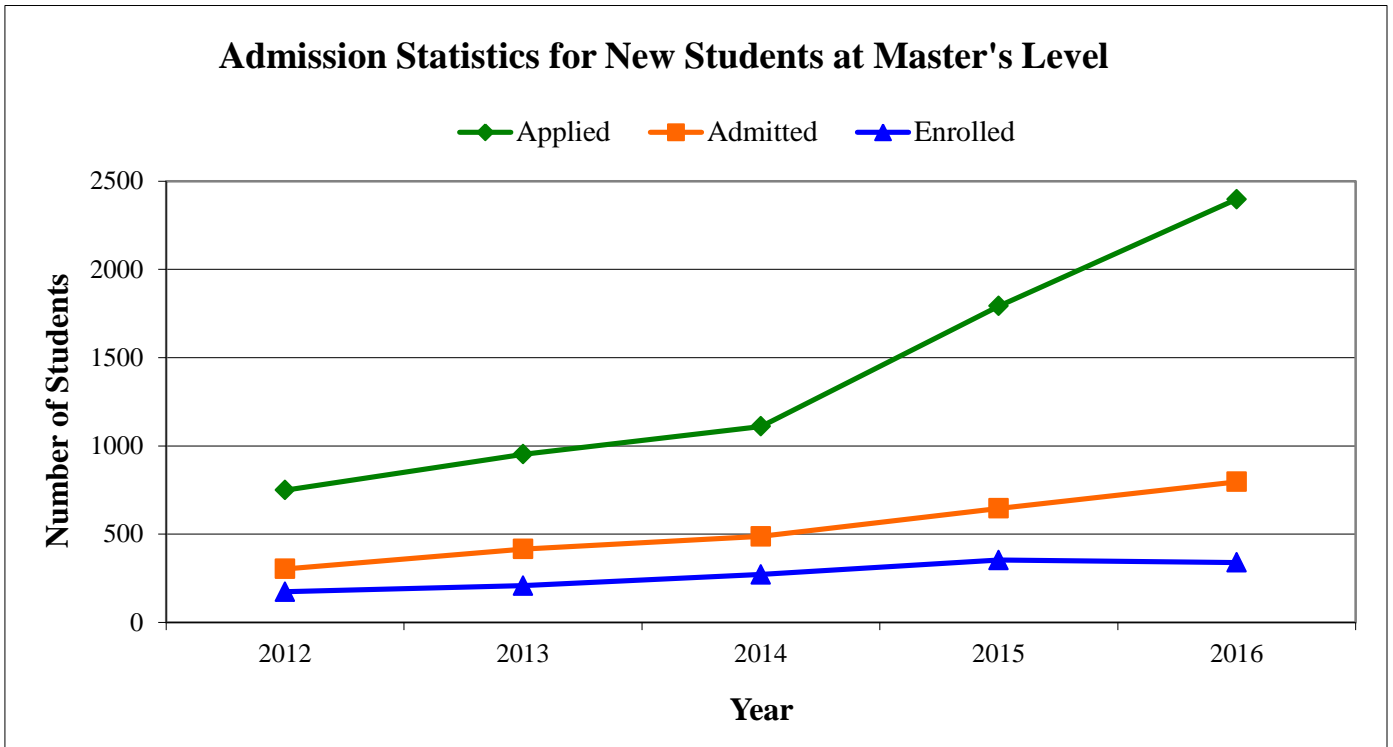
Note: Numbers are based on the application school from UM's Graduate Student Admission System.

Source: CaneLink

ADMISSION STATISTICS FOR NEW STUDENTS AT MASTER'S LEVEL
Five-Year Trends, Fall Semesters

HEADCOUNTS						
	2012	2013	2014	2015	2016	4-Year Change
Applied	749	952	1,110	1,792	2,397	220%
Accepted	303	415	487	646	796	163%
Enrolled	173	208	271	353	339	96%

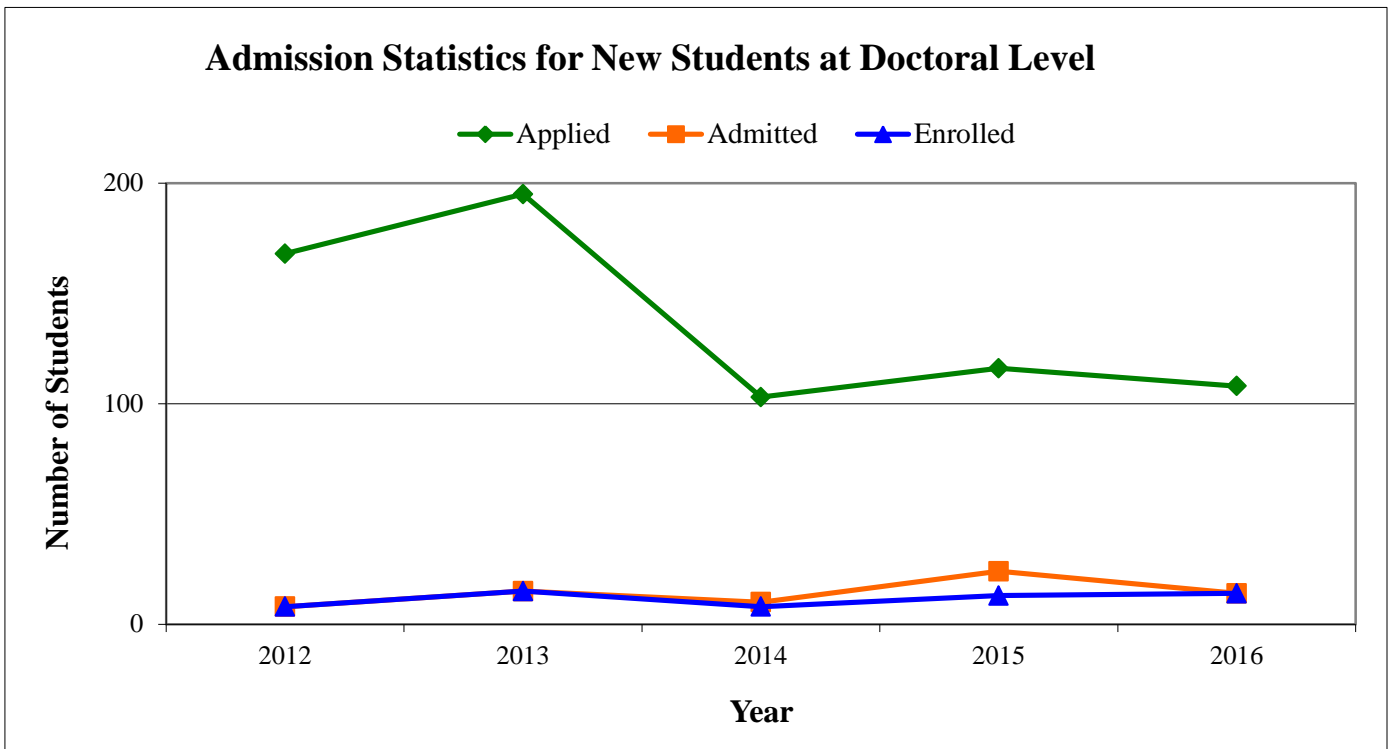
Note: Numbers are based on the application school from UM's Graduate Student Admission System.
Source: CaneLink



ADMISSION STATISTICS FOR NEW STUDENTS AT DOCTORAL LEVEL
Five-Year Trends, Fall Semesters

HEADCOUNTS						
	2012	2013	2014	2015	2016	4-Year Change
Applied	168	195	103	116	108	-36%
Admitted	8	15	10	24	14	75%
Enrolled	8	15	8	13	14	75%

Note: Numbers are based on the application school from UM's Graduate Student Admission System.
Source: CaneLink



UNDERGRADUATE HEADCOUNTS BY MAJOR
Fall Semester, 2016

Major Code	Major Name	CIP Code	UNDERGRADUATE						Total UG
			Fr	So	Jr	Sr	DUG	NDUG	
ACCT	Accounting	52.0301	38	33	76	114	261	0	261
BTEC	Business Technology	11.1005	9	15	21	21	66	0	66
BUAN	Business Analytics	52.1302	5	4	8	10	27	0	27
CISY	Computer Information Systems	11.0401	0	0	0	2	2	0	2
ECON	Economics	52.0601	32	47	52	69	200	0	200
ENTR	Entrepreneurship	52.0701	62	54	47	39	202	0	202
FINL	Finance	52.0801	131	162	201	208	702	0	702
GBST	Global Business Studies	52.1101	4	4	0	0	8	0	8
HRMG	Human Resources Management	52.1001	2	3	1	3	9	0	9
HSMP	Health Sector Management and Policy	51.0701	2	7	7	16	32	0	32
IFMK	International Finance and Marketing	52.1101	41	35	20	25	121	0	121
LSTU	Legal Studies	22.0000	16	20	25	48	109	0	109
MGMT	Management	52.0201	64	46	79	80	269	0	269
MGTS	Management Science	52.1301	0	0	0	1	1	0	1
MKTG	Marketing	52.1401	61	66	105	116	348	0	348
REAL	Real Estate	52.1501	17	8	4	9	38	0	38
UBU	Undeclared Business	52.0299	133	103	39	12	287	0	287
TOTAL			617	607	685	773	2,682	0	2,682

Note: Numbers in this table are the sum of primary and additional majors. The sum across departments represents a duplicate headcount.

Source: CaneLink

GRADUATE HEADCOUNTS BY MAJOR

Fall Semester, 2016

Major Code	Major Name	CIP Code	GRADUATE					Total Grad
			Master's	Ph.D.	Rsch	Other Doc	Doc-Prof Practice	
ACCT	Accounting	52.0301	81	0	0	0	0	81
BFIN	PhD-Business Administration (Finance)	52.0201	0	35	0	0	0	35
BUAN	Business Analytics	52.1302	26	0	0	0	0	26
BUSA	Master of Business Administration	52.0201	136	0	0	0	0	136
BUSAR	M.B.A.-Accel M.B.A. in Real Estate	52.0201	5	0	0	0	0	5
ECON	Economics	52.0601	7	12	0	0	0	19
EMBA	Executive M.B.A.	52.0201	11	0	0	0	0	11
FINL	Finance	52.0801	23	0	0	0	0	23
GBCT	Graduate Business Certificate	52.0101	0	0	0	0	32	32
GLDS	Certificate in Leadership	52.0213	0	0	0	0	6	6
HLTH	Executive M.B.A.-Health Sector Mgt & Policy	51.0701	53	0	0	0	0	53
IDS	Interdisciplinary Studies	30.9999	0	1	0	0	0	1
INBS	International Business Studies	52.1101	24	0	0	0	0	24
JDMB	Law J.D./M.B.A. Program	22.0101	0	0	0	20	0	20
MBAA	Executive M.B.A. for the Americas	52.0201	40	0	0	0	0	40
MBAJ	B. Arch./M.B.A. Joint Degree Program	52.0201	1	0	0	0	0	1
MDMBA	Medical School (M.D./M.B.A. 5th yr)	51.1201	0	0	0	5	0	5
MEAA	Executive M.B.A.-Artists & Athletes	52.0201	16	0	0	0	0	16
MGST	Management Studies	52.1207	27	0	0	0	0	27
OACC	UOnline-LE Master in Professional Accounting	52.0301	37	0	0	0	0	37
OACCT	UOnline-LE Certificate in Accounting	52.0301	0	0	0	0	23	23
OBUSA	UOnline-LE M.B.A.	52.0201	80	0	0	0	0	80
OCFIN	UOnline-LE Certificate in Corporate Finance	52.0899	0	0	0	0	7	7
OFDM	UOnline-LE Certificate in Financial Decision Making	52.0899	0	0	0	0	11	11
OFINL	UOnline-LE Master in Finance	52.0801	42	0	0	0	0	42
PROF	Global Executive M.B.A.	52.0201	30	0	0	0	0	30
TAXT	Master of Science in Taxation	52.1601	21	0	0	0	0	21
WRKP	M.B.A.-Working Professionals	52.0201	113	0	0	0	0	113
TOTAL			773	48	0	25	79	925

Note: Students enrolled in a program that awards degrees from more than one school are counted in both schools (note that some students may be taking courses in only one of these schools this semester).

Source: CaneLink

UNDERGRADUATE HEADCOUNTS BY MAJOR

Five-Year Trends, Fall Semesters (Combined DUG and NDUG, Includes Primary and Additional Majors)

Major Code	Major Name	CIP Code	2012	2013	2014	2015	2016
ACCT	Accounting	52.0301	253	317	316	275	261
BTEC	Business Technology	11.1005	0	0	0	7	66
BUAN	Business Analytics	52.1302	0	0	0	0	27
CISY	Computer Information Systems	11.0401	9	16	22	48	2
ECON	Economics	52.0601	169	219	209	214	200
ENTR	Entrepreneurship	52.0701	140	131	146	179	202
FINL	Finance	52.0801	491	543	543	638	702
GBST	Global Business Studies	52.1101	0	0	0	0	8
HRMG	Human Resources Management	52.1001	13	15	11	22	9
HSMP	Health Sector Management and Policy	51.0701	27	26	39	39	32
IFMK	International Finance and Marketing	52.1101	164	153	148	138	121
LSTU	Legal Studies	22.0000	96	107	86	93	109
MGMT	Management	52.0201	262	288	320	285	269
MGTS	Management Science	52.1301	14	21	15	24	1
MKTG	Marketing	52.1401	240	278	302	329	348
POLB	Political Science	45.1001	0	4	3	1	0
REAL	Real Estate	52.1501	21	24	28	36	38
UBU	Undeclared Business	52.0299	296	303	305	307	287
TOTAL			2,195	2,445	2,493	2,635	2,682

Note: Numbers in this table are the sum of primary and additional majors from all degrees. The sum across departments represents a duplicate headcount.

Source: PeopleSoft

GRADUATE HEADCOUNTS BY MAJOR
Five-Year Trends, Fall Semesters

Major Code	Major Name	CIP Code	2012	2013	2014	2015	2016
ACCT	Accounting	52.0301	78	88	93	100	81
AOMB	Add on M.B.A.-M.S.P.M.	52.0201	3	1	1	0	0
BADT	Business Administration-Temporary	52.0201	0	2	0	0	0
BFIN	PhD-Business Administration (Finance)	52.0201	22	18	19	29	35
BUAD	Business Administration	52.0201	0	15	10	5	0
BUAN	Business Analytics	52.1302	0	0	11	14	26
BUSA	Master of Business Administration	52.0201	140	171	181	171	136
BUSAE	Executive M.B.A.	52.0201	0	2	2	4	0
BUSAR	M.B.A.-Accel M.B.A. in Real Estate	52.0201	0	1	3	6	5
ECON	Economics	52.0601	12	8	20	20	19
EMBA	Executive M.B.A.	52.0201	46	39	40	38	11
FINL	Finance	52.0801	0	0	13	18	23
GBCT	Graduate Business Certificate	52.0101	19	15	16	13	32
GLDS	Certificate in Leadership	52.0213	0	0	0	0	6
HLTH	Executive M.B.A.-Health Sector Mgt & Policy	51.0701	0	53	50	56	53
IDS	Interdisciplinary Studies	30.9999	2	1	2	1	1
INBS	International Business Studies	52.1101	0	0	11	19	24
JDMB	Law J.D./M.B.A. Program	22.0101	23	20	21	21	20
MBAA	Executive M.B.A. for the Americas	52.0201	0	0	23	46	40
MBAJ	B. Arch./M.B.A. Joint Degree Program	52.0201	0	0	0	0	1
MDMBA	Medical School (M.D./M.B.A. 5th yr)	51.1201	24	14	16	15	5
MEAA	Executive M.B.A.-Artists & Athletes	52.0201	0	0	0	40	16
MGST	Management Studies	52.1207	0	0	0	12	27
MWP1	M.B.A.-Working Professionals	52.0201	114	0	0	0	0
OACC	UOnline-LE Master in Professional Accounting	52.0301	0	0	0	0	37
OACCT	UOnline-LE Certificate in Accounting	52.0301	0	0	0	17	23
OBUSA	UOnline-LE M.B.A.	52.0201	0	0	0	29	80
OCFIN	UOnline-LE Certificate in Corporate Finance	52.0899	0	0	0	10	7
OFDM	UOnline-LE Certificate in Financial Decision Making	52.0899	0	0	0	4	11
OFD1	Executive M.B.A.-Delray	52.0201	15	0	0	0	0
OFINL	UOnline-LE Master in Finance	52.0801	0	0	0	52	42
OFPT	Executive M.B.A.-Puerto Rico	52.0201	8	17	16	15	0
PROF	Global Executive M.B.A.	52.0201	37	32	42	40	30
SHA1	Executive M.B.A.-Health Administration	51.0701	69	0	0	0	0
TAXT	Master of Science in Taxation	52.1601	20	24	26	22	21
WRKP	M.B.A.-Working Professionals	52.0201	0	114	129	121	113
TOTAL			632	635	745	938	925

Note: Students enrolled in a program that awards degrees from more than one school are counted in both schools (note that some students may be taking courses in only one of these schools this semester).

Source: PeopleSoft

UNDERGRADUATE HEADCOUNTS BY MINOR

Fall Semester, 2016

Major Code	Major Name	CIP Code	UNDERGRADUATE						Total UG
			Fr	So	Jr	Sr	DUG	NDUG	
ACCT	Accounting	52.0301	0	7	31	42	80	0	80
BMO	Business Management & Organization	52.0201	0	0	0	1	1	0	1
BSLW	Business Law	22.0000	7	32	44	66	149	0	149
BTEC	Business Technology	11.1005	0	7	23	20	50	0	50
BUAD	Business Administration	52.0201	0	0	2	12	14	0	14
BUAN	Business Analytics	52.1302	0	0	0	1	1	0	1
CISY	Computer Information Systems	11.0401	0	0	1	0	1	0	1
ECON	Economics	52.0601	6	28	39	63	136	0	136
ENTR	Entrepreneurship	52.0701	6	30	41	64	141	0	141
FINL	Finance	52.0801	5	38	78	114	235	0	235
HSMP	Health Sector Management and Policy	51.0701	3	14	18	29	64	0	64
IBUSB	International Business	52.1101	0	2	4	6	12	0	12
MGMT	Management	52.0201	3	25	48	77	153	0	153
MKTG	Marketing	52.1401	15	77	150	156	398	0	398
REAL	Real Estate	52.1501	2	2	2	0	6	0	6
TOTAL			47	262	481	651	1,441	0	1,441

Note: Numbers in this table are the sum of primary and additional minors from all degrees. The sum across departments represents a duplicate headcount.

Source: CaneLink

GENDER
Fall Semester, 2016

Gender	All Undergraduates		Graduate Students		All Students	
	Number	%	Number	%	Number	%
Men	1,400	61%	525	59%	1,925	60%
Women	905	39%	365	41%	1,270	40%
TOTAL	2,305	100%	890	100%	3,195	100%

Source: CaneLink

GENDER—ALL UNDERGRADUATES
Five-Year Trends, Fall Semesters

ALL UNDERGRADUATES						
Gender	2012	2013	2014	2015	2016	4-Year Change
Men	1,200	1,356	1,361	1,414	1,400	17%
Women	734	810	870	917	905	23%
TOTAL	1,934	2,166	2,231	2,331	2,305	19%

PERCENTAGE BY GENDER

Gender	2012	2013	2014	2015	2016
Men	62%	63%	61%	61%	61%
Women	38%	37%	39%	39%	39%
TOTAL	100%	100%	100%	100%	100%

Source: CaneLink

GENDER—GRADUATE STUDENTS
Five-Year Trends, Fall Semesters

GRADUATE STUDENTS						
Gender	2012	2013	2014	2015	2016	4-Year Change
Men	352	354	417	572	525	49%
Women	233	247	289	328	365	57%
TOTAL	585	601	706	900	890	52%

PERCENTAGE BY GENDER					
Gender	2012	2013	2014	2015	2016
Men	60%	59%	59%	64%	59%
Women	40%	41%	41%	36%	41%
TOTAL	100%	100%	100%	100%	100%

Source: CaneLink

ETHNICITY
Fall Semester, 2016

Ethnicity	All Undergraduates		Graduate Students		All Students	
	Number	%	Number	%	Number	%
Hispanic	511	24%	301	39%	812	28%
American Indian/Alaska Native	4	0%	1	0%	5	0%
Asian/Pacific Islander	266	12%	113	15%	379	13%
Black	108	5%	71	9%	179	6%
White	1,226	56%	284	37%	1,510	51%
Two or more races	59	3%	8	1%	67	2%
Unknown	131	n.a.	112	n.a.	243	n.a.
TOTAL	2,305	100%	890	100%	3,195	100%

Note: Percentages have been adjusted to exclude unknown race/ethnicity.

Source: CaneLink

ETHNICITY—ALL UNDERGRADUATES
Five-Year Trends, Fall Semesters

ALL UNDERGRADUATES						
Ethnicity	2012	2013	2014	2015	2016	4-Year Change
Hispanic	387	432	451	496	511	32%
American Indian/Alaska Native	2	3	1	3	4	100%
Asian/Pacific Islander	343	374	339	305	266	-22%
Black	80	85	103	115	108	35%
White	948	1,038	1,121	1,202	1,226	29%
Two or more races	29	44	54	61	59	103%
Unknown	145	190	162	149	131	-10%
TOTAL	1,934	2,166	2,231	2,331	2,305	19%

PERCENTAGE BY ETHNICITY

Ethnicity	2012	2013	2014	2015	2016
Hispanic	22%	22%	22%	23%	24%
American Indian/Alaska Native	0%	0%	0%	0%	0%
Asian/Pacific Islander	19%	19%	16%	14%	12%
Black	4%	4%	5%	5%	5%
White	53%	53%	54%	55%	56%
Two or more races	2%	2%	3%	3%	3%
TOTAL	100%	100%	100%	100%	100%

Note: Percentages have been adjusted to exclude unknown race/ethnicity.

Source: CaneLink

ETHNICITY—GRADUATE STUDENTS
Five-Year Trends, Fall Semesters

GRADUATE STUDENTS						
Ethnicity	2012	2013	2014	2015	2016	4-Year Change
Hispanic	255	219	287	348	301	18%
American Indian/Alaska Native	1	0	0	0	1	0%
Asian/Pacific Islander	97	115	136	121	113	16%
Black	20	24	46	83	71	255%
White	174	185	169	209	284	63%
Two or more races	4	5	11	9	8	100%
Unknown	34	53	57	130	112	229%
TOTAL	585	601	706	900	890	52%

PERCENTAGE BY ETHNICITY					
Ethnicity	2012	2013	2014	2015	2016
Hispanic	46%	40%	44%	45%	39%
American Indian/Alaska Native	0%	0%	0%	0%	0%
Asian/Pacific Islander	18%	21%	21%	16%	15%
Black	4%	4%	7%	11%	9%
White	32%	34%	26%	27%	37%
Two or more races	1%	1%	2%	1%	1%
TOTAL	100%	100%	100%	100%	100%

Note: Percentages have been adjusted to exclude unknown race/ethnicity.
Source: CaneLink

AGE DISTRIBUTION
Fall Semester, 2016

Age	All Undergraduates		Graduate Students	
	Number	%	Number	%
18 & Under	412	18%	n.a.	n.a.
19 - 24 (< 25 for Grad)	1,875	81%	206	23%
25 - 29	13	1%	278	31%
30 - 39	4	0%	278	31%
40 & Over	1	0%	128	14%
TOTAL	2,305	100%	890	100%
Mean Age	19.9		30.8	

Source: CaneLink

GEOGRAPHIC ORIGINS

Fall Semester, 2016

HEADCOUNTS

Geographic Origins	New Freshmen	New Transfers	All Undergraduates	Graduate Students
Miami-Dade County	36	8	269	293
Broward County	19	0	112	84
Other Florida	52	1	185	89
Other U.S. & Territories	296	12	1,269	195
International	82	3	470	229
Non-US Campus	0	0	0	0
TOTAL	485	24	2,305	890

PERCENTAGE BY GEOGRAPHIC ORIGIN

Geographic Origins	New Freshmen	New Transfers	All Undergraduates	Graduate Students
Miami-Dade County	7%	33%	12%	33%
Broward County	4%	0%	5%	9%
Other Florida	11%	4%	8%	10%
Other U.S. & Territories	61%	50%	55%	22%
International	17%	13%	20%	26%
Non-US Campus	0%	0%	0%	0%
TOTAL	100%	100%	100%	100%

Source: CaneLink

GEOGRAPHIC ORIGINS—ALL UNDERGRADUATES
Five-Year Trends, Fall Semesters

ALL UNDERGRADUATES						
Geographic Origins	2012	2013	2014	2015	2016	4-Year Change
Miami-Dade County	239	262	273	291	269	13%
Broward County	117	121	122	117	112	-4%
Other Florida	193	209	188	186	185	-4%
Other U.S. & Territories	907	1,024	1,104	1,227	1,269	40%
International	478	550	544	510	470	-2%
Non-US Campus	0	0	0	0	0	n.a.
TOTAL	1,934	2,166	2,231	2,331	2,305	19%

PERCENTAGE BY GEOGRAPHIC ORIGIN					
Geographic Origins	2012	2013	2014	2015	2016
Miami-Dade County	12%	12%	12%	12%	12%
Broward County	6%	6%	5%	5%	5%
Other Florida	10%	10%	8%	8%	8%
Other U.S. & Territories	47%	47%	49%	53%	55%
International	25%	25%	24%	22%	20%
Non-US Campus	0%	0%	0%	0%	0%
TOTAL	100%	100%	100%	100%	100%

Source: CaneLink

GEOGRAPHIC ORIGINS—GRADUATE STUDENTS
Five-Year Trends, Fall Semesters

GRADUATE STUDENTS						
Geographic Origins	2012	2013	2014	2015	2016	4-Year Change
Miami-Dade County	228	222	254	301	293	29%
Broward County	52	41	52	78	84	62%
Other Florida	51	43	51	76	89	75%
Other U.S. & Territories	100	119	126	200	195	95%
International	154	176	223	245	229	49%
Non-US Campus	0	0	0	0	0	n.a.
TOTAL	585	601	706	900	890	52%

PERCENTAGE BY GEOGRAPHIC ORIGIN					
Geographic Origins	2012	2013	2014	2015	2016
Miami-Dade County	39%	37%	36%	33%	33%
Broward County	9%	7%	7%	9%	9%
Other Florida	9%	7%	7%	8%	10%
Other U.S. & Territories	17%	20%	18%	22%	22%
International	26%	29%	32%	27%	26%
Non-US Campus	0%	0%	0%	0%	0%
TOTAL	100%	100%	100%	100%	100%

Source: CaneLink

HEADCOUNTS BY STATE OR COUNTRY AND BY WORLD REGION
Fall Semester, 2016

State/Country	UNDERGRADUATE				Graduate	Total
	New Freshmen	New Transfers	Total DUG	NDUG		
NEW ENGLAND						
Connecticut	20	0	61	0	2	63
Maine	1	1	6	0	0	6
Massachusetts	20	2	71	0	9	80
New Hampshire	2	0	11	0	3	14
Rhode Island	1	0	10	0	2	12
Vermont	1	0	2	0	0	2
TOTAL	45	3	161	0	16	177

MIDDLE STATES						
Delaware	1	0	2	0	0	2
District of Columbia	1	0	2	0	2	4
Maryland	7	0	49	0	4	53
New Jersey	56	2	242	0	13	255
New York	57	2	233	0	18	251
Pennsylvania	18	0	87	0	7	94
TOTAL	140	4	615	0	44	659

SOUTHERN						
Alabama	0	0	3	0	0	3
Florida	107	9	566	0	466	1,032
Georgia	6	0	31	0	10	41
Kentucky	0	0	1	0	0	1
Louisiana	2	0	3	0	6	9
Mississippi	0	0	1	0	2	3
North Carolina	6	0	12	0	11	23
South Carolina	0	0	2	0	1	3
Tennessee	2	0	7	0	3	10
Virginia	4	0	23	0	6	29
TOTAL	127	9	649	0	505	1,154

MIDWESTERN						
Illinois	14	1	71	0	9	80
Indiana	3	0	7	0	3	10
Kansas	0	0	4	0	0	4
Michigan	10	0	25	0	8	33
Minnesota	3	0	7	0	0	7
Missouri	3	0	28	0	2	30
Nebraska	2	0	4	0	2	6
Ohio	5	1	24	0	3	27

HEADCOUNTS BY STATE OR COUNTRY AND BY WORLD REGION
Fall Semester, 2016

State/Country	UNDERGRADUATE				Graduate	Total
	New Freshmen	New Transfers	Total DUG	NDUG		
West Virginia	2	1	3	0	0	3
Wisconsin	0	0	4	0	1	5
TOTAL	42	3	177	0	28	205

WESTERN

Arizona	1	0	3	0	3	6
California	19	1	78	0	16	94
Colorado	0	0	8	0	5	13
Hawaii	0	0	5	0	0	5
Idaho	0	0	0	0	1	1
Nevada	1	0	1	0	1	2
Oregon	0	0	2	0	1	3
Utah	1	0	2	0	1	3
Washington	0	0	1	0	1	2
TOTAL	22	1	100	0	29	129

SOUTHWESTERN

Arkansas	1	0	2	0	0	2
Oklahoma	0	0	0	0	1	1
Texas	11	1	42	0	20	62
TOTAL	12	1	44	0	21	65

U. S. TERRITORIES

Puerto Rico	0	0	8	0	8	16
U.S. Virgin Islands	0	0	2	0	0	2
TOTAL	0	0	10	0	8	18

NORTH AMERICA

Canada	1	0	9	0	7	16
Mexico	3	0	13	0	16	29
TOTAL	4	0	22	0	23	45

CARIBBEAN

Bahamas	0	0	1	0	1	2
Barbados	0	0	1	0	0	1
Dominican Republic	0	0	2	0	0	2
Grenada	0	0	0	0	1	1
Haiti	0	0	0	0	1	1
Jamaica	0	0	0	0	2	2
Trinidad and Tobago	1	0	2	0	0	2
TOTAL	1	0	6	0	5	11

HEADCOUNTS BY STATE OR COUNTRY AND BY WORLD REGION
Fall Semester, 2016

State/Country	UNDERGRADUATE				Graduate	Total
	New Freshmen	New Transfers	Total DUG	NDUG		

CENTRAL AMERICA

Costa Rica	0	0	1	0	1	2
El Salvador	0	0	2	0	0	2
Guatemala	0	0	2	0	0	2
Honduras	0	0	1	0	2	3
Nicaragua	0	0	0	0	1	1
Panama	1	0	5	0	0	5
TOTAL	1	0	11	0	4	15

SOUTH AMERICA

Argentina	1	0	4	0	2	6
Bolivia	0	0	4	0	1	5
Brazil	6	0	34	0	9	43
Chile	0	0	0	0	2	2
Colombia	1	0	18	0	9	27
Ecuador	3	1	4	0	6	10
Paraguay	1	0	3	0	0	3
Peru	0	0	0	0	5	5
Uruguay	0	0	0	0	1	1
Venezuela	5	0	40	0	29	69
TOTAL	17	1	107	0	64	171

EUROPE

Austria	0	0	2	0	0	2
Bosnia and Herzegovina	0	0	0	0	1	1
Bulgaria	1	0	2	0	1	3
Estonia	0	0	0	0	1	1
France	1	0	6	0	1	7
Georgia	0	0	0	0	1	1
Germany	1	0	2	0	3	5
Greece	1	0	1	0	0	1
Hungary	0	0	1	0	0	1
Italy	5	0	16	0	2	18
Netherlands	1	0	2	0	1	3
Norway	1	0	3	0	0	3
Poland	0	0	1	0	0	1
Portugal	0	0	1	0	0	1
Republic of Serbia	0	0	1	0	2	3
Romania	0	0	2	0	0	2
Russian Federation	1	0	5	0	1	6
Spain	3	0	12	0	0	12
Sweden	1	0	3	0	0	3

HEADCOUNTS BY STATE OR COUNTRY AND BY WORLD REGION
Fall Semester, 2016

State/Country	UNDERGRADUATE				Graduate	Total
	New Freshmen	New Transfers	Total DUG	NDUG		
Switzerland	1	0	6	0	0	6
Ukraine	0	0	2	0	1	3
United Kingdom	1	0	5	0	1	6
TOTAL	18	0	73	0	16	89

MIDDLE EAST

Egypt	0	0	1	0	2	3
Iran (Islamic Republic of)	0	0	0	0	2	2
Israel	0	0	2	0	0	2
Kuwait	3	0	12	0	1	13
Lebanon	0	0	1	0	0	1
Oman	0	0	0	0	1	1
Palestine	0	0	0	0	1	1
Qatar	0	0	1	0	1	2
Saudi Arabia	0	0	8	0	3	11
Turkey	2	0	12	0	1	13
United Arab Emirates	1	0	4	0	0	4
Yemen	0	0	1	0	0	1
TOTAL	6	0	42	0	12	54

AFRICA

Cameroon	0	0	1	0	1	2
Ethiopia	0	0	1	0	0	1
Gambia	0	0	0	0	1	1
Kenya	0	0	0	0	1	1
Mauritius	1	0	1	0	0	1
Morocco	0	0	1	0	1	2
Nigeria	0	0	0	0	1	1
Rwanda	0	0	0	0	1	1
Sudan	0	0	0	0	1	1
Tunisia	0	0	1	0	1	2
TOTAL	1	0	5	0	8	13

SOUTHEAST ASIA

Myanmar	1	0	3	0	0	3
Singapore	0	0	1	0	0	1
Thailand	0	0	1	0	3	4
Viet Nam	0	0	2	0	0	2
TOTAL	1	0	7	0	3	10

HEADCOUNTS BY STATE OR COUNTRY AND BY WORLD REGION
Fall Semester, 2016

State/Country	UNDERGRADUATE				Graduate	Total
	New Freshmen	New Transfers	Total DUG	NDUG		
ASIA						
Afghanistan	0	0	1	0	1	2
Bangladesh	1	0	1	0	0	1
China	22	2	166	0	85	251
Hong Kong	0	0	1	0	0	1
India	4	0	12	0	2	14
Japan	0	0	1	0	1	2
Korea, Republic of	2	0	4	0	4	8
Macao	0	0	1	0	0	1
Nepal	0	0	2	0	0	2
Pakistan	1	0	1	0	0	1
Taiwan, Province of China	1	0	1	0	1	2
Uzbekistan	1	0	1	0	0	1
TOTAL	32	2	192	0	94	286
AUSTRALIA						
Australia	1	0	4	0	0	4
New Zealand	0	0	1	0	0	1
TOTAL	1	0	5	0	0	5
US LIVING ABROAD						
US Students Living Abroad	15	0	79	0	10	89
TOTAL	15	0	79	0	10	89
GRAND TOTAL	485	24	2,305	0	890	3,195

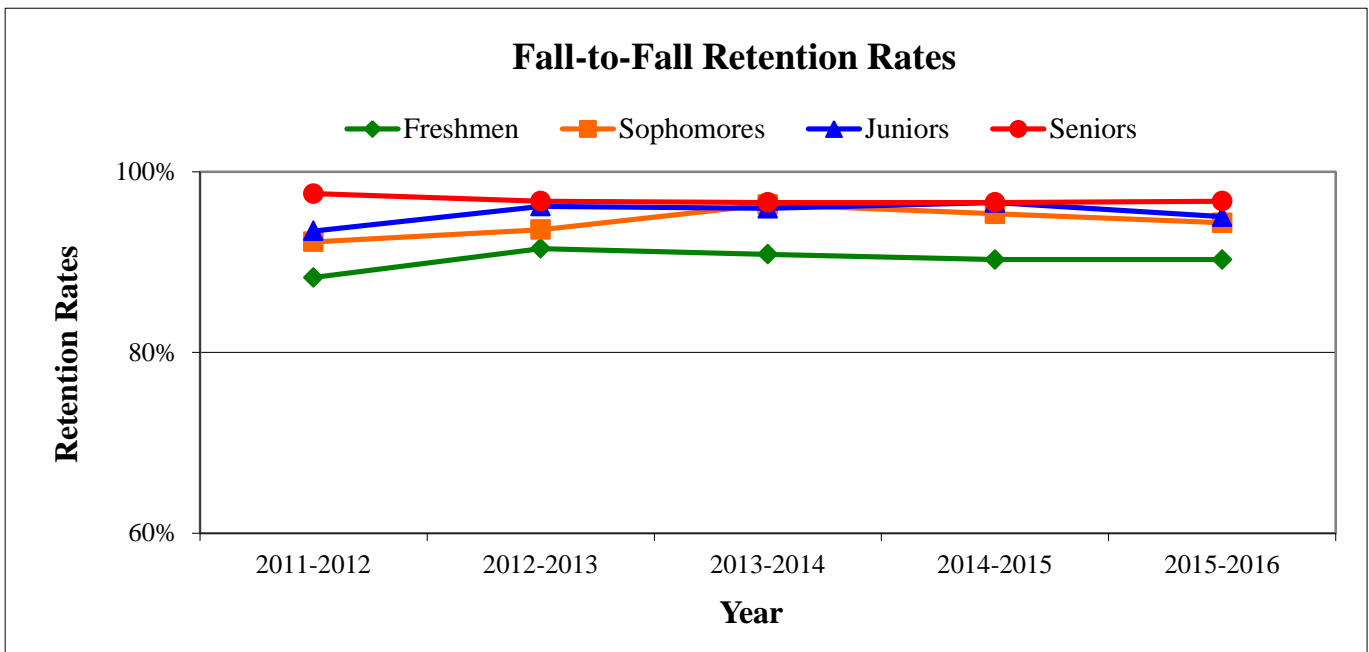
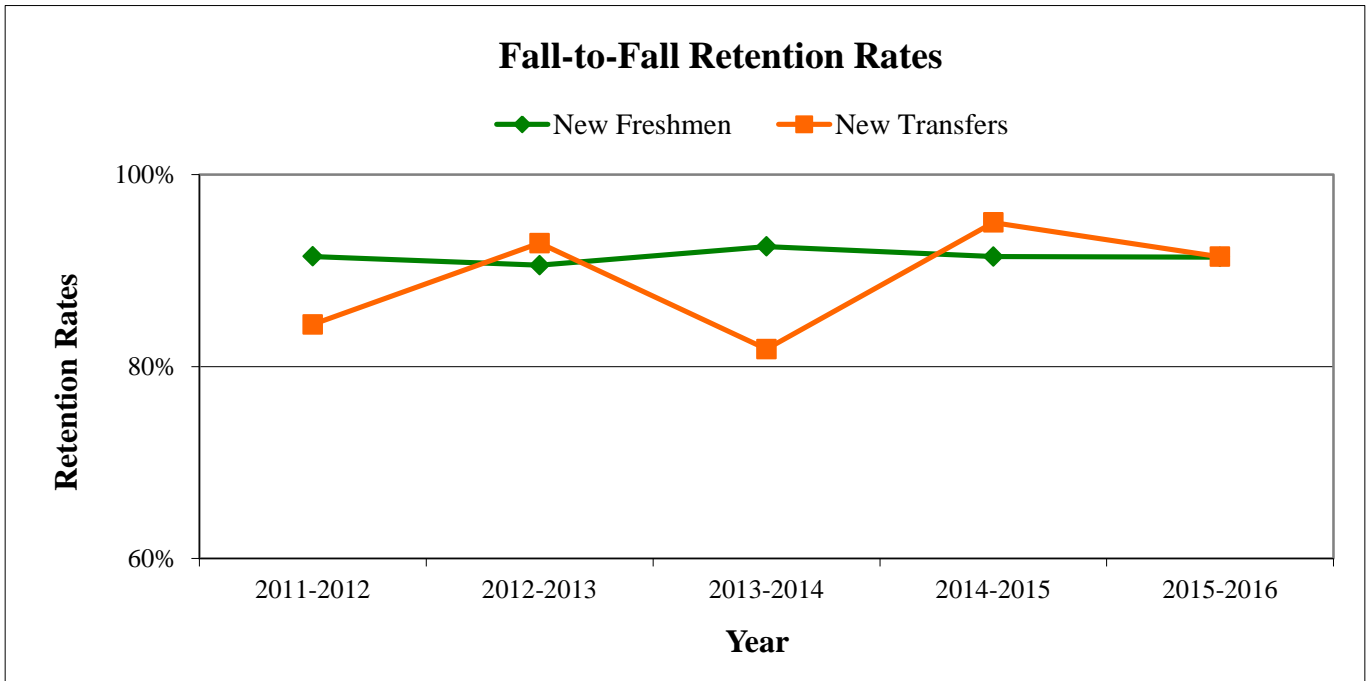
Source: CaneLink (Visa Country for International and Locality for all others)

FALL-TO-FALL (BENCHMARK) RETENTION RATE TRENDS
Full-Time Degree Undergraduates

	2011-2012		2012-2013		2013-2014		2014-2015		2015-2016		Change	
	Number	Percent	Number	Percent	Number	Percent	Number	Percent	Number	Percent	1 year	4 year
New Freshmen	434	91.5%	424	90.5%	454	92.5%	491	91.4%	500	91.4%	0.0%	-0.1%
New Transfers	32	84.4%	28	92.9%	22	81.8%	20	95.0%	35	91.4%	-3.6%	7.1%
Freshmen	556	88.3%	508	91.5%	571	90.9%	587	90.3%	607	90.3%	0.0%	2.0%
Sophomores	478	92.3%	485	93.6%	498	96.4%	540	95.4%	568	94.4%	-1.0%	2.1%
Juniors	398	93.5%	499	96.2%	544	96.0%	530	96.6%	566	95.0%	-1.6%	1.6%
Seniors	455	97.6%	400	96.8%	502	96.6%	531	96.6%	556	96.8%	0.2%	-0.8%
All	1,887	92.6%	1,892	94.4%	2,115	94.8%	2,188	94.6%	2,297	94.0%	-0.6%	1.4%

Note: Number is total number in first-fall cohort; percent is the percent who returned/graduated, adjusted for deceased students.
Source: PIR Retention Rate (Benchmark) Database

FALL-TO-FALL (BENCHMARK) RETENTION RATE TRENDS
Full-Time Degree Undergraduates



TOTAL CREDIT HOURS TAUGHT
Five-Year Trends, Fall Semester

Level	2012	2013	2014	2015	2016	4-Year Change
Undergraduate	26,360	30,654	31,250	32,856	32,722	24%
Graduate	5,875	6,963	9,319	10,646	10,117	72%
TOTAL	32,235	37,617	40,569	43,502	42,839	33%

Note: Graduate research credits were increased from 0 to 1.

Source: CaneLink

TOTAL CREDIT HOURS TAUGHT BY DEPARTMENT
Fall Semester, 2016

Dept Code	Teaching Department	Undergraduate Credit	Graduate Credit	Total
ACC	Accounting	3,424	2,158	5,582
BSL	Business Law	2,289	657	2,946
BTE	Business Technology	1,680	490	2,170
BUS	Business	4,548	1,732	6,280
ECO	Economics	5,706	564	6,270
FIN	Finance	3,912	1,448	5,360
HSM	Health Sector Management and Policy	150	0	150
MAS	Management Science	2,640	1,243	3,883
MGT	Management	4,515	1,428	5,943
MKT	Marketing	3,858	397	4,255
TOTAL		32,722	10,117	42,839

Note: Graduate research credits were increased from 0 to 1.

Source: PeopleSoft

TOTAL CREDIT HOURS TAUGHT BY DEPARTMENT
Five-Year Trends, Fall Semesters

Dept Code	Teaching Department	TOTAL CREDIT HOURS				
		2012	2013	2014	2015	2016
ACC	Accounting	4,777	5,488	5,708	5,819	5,582
BSL	Business Law	2,381	2,620	2,602	2,821	2,946
BTE	Business Technology	0	0	0	2,253	2,170
BUS	Business	360	515	4,278	6,085	6,280
CIS	Computer Information Systems	2,246	2,351	1,752	0	0
ECO	Economics	5,949	7,382	7,248	6,692	6,270
FIN	Finance	3,733	4,384	4,562	5,137	5,360
HSM	Health Sector Management and Policy	0	0	0	0	150
IDS	Interdepartmental Studies	2	0	1	0	0
MAS	Management Science	3,146	3,547	3,809	4,262	3,883
MGT	Management	6,051	7,341	6,154	5,893	5,943
MKT	Marketing	3,590	3,989	4,455	4,540	4,255
TOTAL		32,235	37,617	40,569	43,502	42,839

Note: Graduate research credits were increased from 0 to 1.

Source: PeopleSoft

CROSSOVER PATTERN FOR TOTAL CREDIT HOURS
Five-Year Trends, Fall Semesters

Teaching School: Business Administration						
Home School	2012	2013	2014	2015	2016	4-Year Change
Architecture	193	184	161	194	163	-16%
Arts and Sciences	3,833	5,269	4,587	5,004	5,123	34%
Business	24,146	28,136	31,917	34,997	34,349	42%
Communication	1,074	1,220	1,282	1,142	1,059	-1%
Education	354	423	289	298	276	-22%
Engineering	599	669	590	612	752	26%
Frost School of Music	354	405	264	261	177	-50%
Law	238	177	208	161	84	-65%
Miller School of Medicine	256	92	275	95	190	-26%
Nursing & Health Studies	243	294	222	153	198	-19%
Rosenstiel School	143	138	111	111	83	-42%
Special & Joint Programs	802	610	663	474	385	-52%
TOTAL	32,235	37,617	40,569	43,502	42,839	33%

Note: Graduate research credits were increased from 0 to 1.

Source: CaneLink

Home School: Business Administration						
Teaching School	2012	2013	2014	2015	2016	4-Year Change
Architecture	24	45	66	83	97	304%
Arts and Sciences	7,591	7,813	7,844	7,502	6,941	-9%
Business	24,146	28,136	31,917	34,997	34,349	42%
Communication	585	781	574	572	891	52%
Education	548	665	697	945	934	70%
Engineering	60	48	22	12	15	-75%
Frost School of Music	502	662	561	646	691	38%
Law	0	0	0	0	0	n.a.
Miller School of Medicine	3	14	11	3	18	500%
Nursing & Health Studies	6	6	21	46	45	650%
Rosenstiel School	411	372	218	200	196	-52%
Special & Joint Programs*	486	448	334	402	405	-17%
TOTAL	34,362	38,990	42,265	45,408	44,582	30%

** Special and Joint teaching school includes credit hours taught to students taking courses abroad through the International Education and Exchange Programs and other special programs.*

Note: Graduate research credits were increased from 0 to 1.

Source: CaneLink

CROSSOVER PATTERN FOR CREDIT HOURS

Fall Semester, 2016

Home School of Majors	Total Credits Taught by Business Administration		
	Undergraduate Credit	Graduate Credit	Total
Architecture	111	52	163
Arts and Sciences	5,095	28	5,123
Business	24,656	9,693	34,349
Communication	1,047	12	1,059
Education	276	0	276
Engineering	696	56	752
Frost School of Music	177	0	177
Law	0	84	84
Miller School of Medicine	0	190	190
Nursing & Health Studies	198	0	198
Rosenstiel School	81	2	83
Cont. Studies & Special & Joint Programs	385	0	385
TOTAL	32,722	10,117	42,839

Note: Graduate research credits were increased from 0 to 1.

Source: CaneLink

Teaching School	Total Credits Taken by Business Administration		
	Undergraduate Credit	Graduate Credit	Total
Architecture	55	42	97
Arts and Sciences	6,902	39	6,941
Business	24,656	9,693	34,349
Communication	891	0	891
Education	898	36	934
Engineering	9	6	15
Frost School of Music	691	0	691
Law	0	0	0
Miller School of Medicine	15	3	18
Nursing & Health Studies	45	0	45
Rosenstiel School	196	0	196
Cont. Studies & Special & Joint Programs*	396	9	405
TOTAL	34,754	9,828	44,582

** Special and Joint teaching school includes credit hours taught to students taking courses abroad through the International Education and Exchange Programs and other special programs.*

Note: Graduate research credits were increased from 0 to 1.

Source: CaneLink

FISCAL YEAR TOTAL CREDIT HOURS TAUGHT

Fiscal Year 2015 - 2016

Dept Code	Teaching Department	Undergraduate Credit	Graduate Credit	Total
ACC	Accounting	7,080	4,405	11,485
BSL	Business Law	4,593	1,092	5,685
BTE	Business Technology	3,822	812	4,634
BUS	Business	7,530	3,479	11,009
CIS	Computer Information Systems	45	0	45
ECO	Economics	11,859	1,277	13,136
FIN	Finance	8,102	3,680	11,782
GBM	Gen Business	132	0	132
HSM	Health Sector Management & Policy	90	0	90
MAS	Management Science	5,613	1,993	7,606
MGT	Management	9,864	3,832	13,696
MKT	Marketing	7,954	1,599	9,553
TOTAL		66,684	22,169	88,853

Note: The University fiscal year includes the summer session and fall semester from one calendar year plus the spring session from the subsequent calendar year.

Graduate research credits were increased from 0 to 1.

Source: PeopleSoft

DEGREES GRANTED BY MAJOR

Year Ending June 30, 2016

Major Code	Major Name	CIP Code	Bachelors	Master's/ Specialist	Doc - Research	Doc - Prof. Practice	Total
ACCT	Accounting	52.0301	73	58	0	0	131
BMGT	PhD-Business Administration (Management)	52.0201	0	0	1	0	1
BTEC	Business Technology	11.1005	5	0	0	0	5
BUAD	Business Administration	52.0201	0	0	3	0	3
BUAN	Business Analytics	52.1302	1	13	0	0	14
BUSA	Master of Business Administration	52.0201	0	109	0	0	109
BUSAE	Executive M.B.A.	52.0201	0	6	0	0	6
BUSAR	M.B.A.-Accel M.B.A. in Real Estate	52.0201	0	3	0	0	3
CISY	Computer Information Systems	11.0401	9	0	0	0	9
ECON	Economics	52.0601	43	13	1	0	57
EMBA	Executive M.B.A.	52.0201	0	24	0	0	24
ENTR	Entrepreneurship	52.0701	31	0	0	0	31
FINL	Finance	52.0801	169	17	0	0	186
HLTH	Executive M.B.A.-Health Sector Mgt & Policy	51.0701	0	27	0	0	27
HRMG	Human Resources Management	52.1001	6	0	0	0	6
HSMP	Health Sector Management and Policy	51.0701	10	0	0	0	10
IFMK	International Finance and Marketing	52.1101	23	0	0	0	23
INBS	International Business Studies	52.1101	0	15	0	0	15
LSTU	Legal Studies	22.0000	18	0	0	0	18
MBAA	Executive M.B.A. for the Americas	52.0201	0	19	0	0	19
MEAA	Executive M.B.A.-Artists & Athletes	52.0201	0	1	0	0	1
MGMT	Management	52.0201	65	0	0	0	65
MGST	Management Studies	52.1207	0	6	0	0	6
MGTS	Management Science	52.1301	6	0	0	0	6
MKTG	Marketing	52.1401	92	0	0	0	92
MSPM	Professional Management	52.0201	0	1	0	0	1
OFIN	UOnline-LE Master in Finance	52.0801	0	12	0	0	12
OFPT	Executive M.B.A.-Puerto Rico	52.0201	0	14	0	0	14
POLX	Political Science	45.1001	1	0	0	0	1
PROF	Global Executive M.B.A.	52.0201	0	18	0	0	18
REAL	Real Estate	52.1501	7	0	0	0	7
TAXT	Master of Science in Taxation	52.1601	0	27	0	0	27
WRKP	M.B.A.-Working Professionals	52.0201	0	97	0	0	97
TOTAL			559	480	5	0	1,044

Note: 74 certificates were awarded in the year ending June 30, 2016.

Source: Report on degrees awarded submitted to U.S. Department of Education.

FACULTY
Five-Year Trends, Fall Semesters

HEADCOUNTS						
	2012	2013	2014	2015	2016	4-Year Change
Full-time	130	132	145	156	158	22%
Part-time	22	22	16	27	24	9%
TOTAL	152	154	161	183	182	20%

PERCENTAGE					
	2012	2013	2014	2015	2016
Full-time	86%	86%	90%	85%	87%
Part-time	14%	14%	10%	15%	13%
TOTAL	100%	100%	100%	100%	100%

Source: Workday HCM (number of employees as of September 30 of each year).

FULL-TIME FACULTY BY TRACK
Fall Semester, 2016

Branch	Full, Assoc., Asst. Prof.	Instructor	Lecturer	Adjunct Faculty	Faculty of Clinical	Faculty Professional Practice	Research Faculty	Visiting Faculty	Librarian Faculty	Total
Accounting	17	0	7	0	0	0	0	0	0	24
Economics	18	0	9	0	0	0	0	1	0	28
Finance	14	0	3	0	0	1	3	2	0	23
Business Law	4	0	11	0	0	0	0	0	0	15
Management	17	0	7	0	0	0	1	0	0	25
Marketing	13	0	6	0	0	0	1	0	0	20
Management Science	10	0	5	0	0	0	0	0	0	15
Computer Information Systems	2	0	4	0	0	2	0	0	0	8
TOTAL	95	0	52	0	0	3	5	3	0	158

Source: Workday HCM (number of employees as of September 30 of each year).

PART-TIME FACULTY BY TRACK
Fall Semester, 2016

Branch	Full,		Voluntary			Faculty		Administrator			Semester Lecturer	Total
	Asst. Prof.	Lecturer	Adjunct Faculty	Faculty of Clinical	Clinical Faculty	Professional Practice	Research Faculty	Visiting Faculty	Teaching Overload	Faculty Emeritus		
Undergraduate Business Programs	0	0	0	0	0	0	0	0	2	0	0	2
Accounting	0	6	0	0	0	0	0	0	1	0	0	7
Economics	0	1	0	0	0	0	0	0	0	0	0	1
Finance	0	2	0	0	0	0	0	0	0	0	0	2
Business Law	0	6	0	0	0	0	0	0	0	0	0	6
Management	0	2	0	0	0	0	0	0	0	0	0	2
Marketing	0	2	0	0	0	0	0	0	0	0	0	2
Business Technology	0	0	0	0	0	0	0	0	1	0	0	1
Health Sector Management & Policy	0	1	0	0	0	0	0	0	0	0	0	1
TOTAL	0	20	0	0	0	0	0	0	4	0	0	24

Source: Workday HCM (number of employees as of September 30 of each year).

GRADE REPORT
Five-Year Trends, Fall Semesters

	2011	2012	2013	2014	2015
Full Time New Freshmen					
Mean GPA for Teaching School of BU	3.32	3.32	3.42	3.24	3.25
Mean GPA for Home School of BU	3.30	3.32	3.41	3.29	3.29
Full Time Degree Undergraduates					
Mean GPA for Teaching School of BU	3.22	3.22	3.22	3.22	3.23
Percent of A's Earned *	43%	42%	43%	41%	43%
Percent of B's Earned *	43%	43%	41%	45%	44%
Percent of C's Earned *	12%	12%	13%	11%	11%
Percent of D's Earned *	1%	2%	2%	1%	1%
Percent of F's Earned *	1%	1%	1%	1%	1%

* Percent relative to total letter grades (i.e., excludes CR, I, IE, IF, NC, NG, and W).

Source: CaneLink

NEW FRESHMAN GRADUATION RATES

Cohort Year	Number in Cohort	Graduated 3 Years or less from		Graduated 4 Years or less from		Graduated 5 Years or less from		Graduated 6 Years or less from	
		BU	Any UM School	BU	Any UM School	BU	Any UM School	BU	Any UM School
2005	434	3.0%	3.2%	68.0%	73.5%	71.7%	78.6%	71.7%	78.6%
2006	380	2.1%	2.1%	76.6%	79.2%	78.2%	81.6%	78.7%	82.6%
2007	416	3.6%	3.6%	68.8%	74.0%	74.3%	81.3%	74.5%	81.5%
2008	408	2.9%	2.9%	68.1%	74.8%	73.0%	81.4%	73.8%	82.6%
2009	356	2.2%	2.2%	67.4%	69.9%	74.2%	77.5%	76.7%	80.3%
2010**	406	2.7%	3.0%	67.0%	72.7%	71.9%	80.0%	n.a.	n.a.
2011**	435	3.7%	3.9%	66.0%	72.9%	n.a.	n.a.	n.a.	n.a.

**** Preliminary, unofficial.**

Note: The six-year graduation rate (150% of the four years in which students are expected to graduate) is the rate reported to the federal government, bond agencies, U.S. News, guidebooks, most other external organizations, and internally.

Source: U.S. Department of Education Graduation Rate Survey